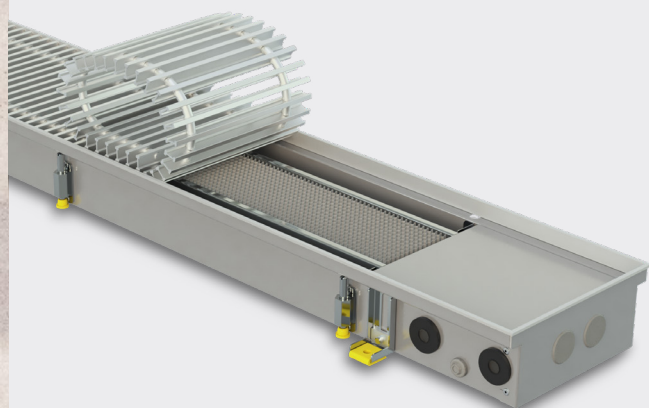


TRENCH HEATERS FC

 FOR HEATING

 NATURAL CONVECTION

- 396 models
- Stainless steel casings
- Tested according to EN 16430 in independent accredited laboratory
- 10 year warranty
- One of the highest heat output on the market
- Exceptional rigidity of casings
- Max operating pressure 25 bar
- Highly efficient, rapid and economic copper - aluminium heat exchangers
- Good compatibility with heat pumps
- All fixing brackets and bolts have sound proofing elements
- Reversible reinforced profile grille
- Possibility to change level of casing at any time during exploitation (when installed in raised floors)



2021

10
YEAR
WARRANTY
★★★★★

TRENCH HEATERS FC

These simple floor-mounted trench heaters FC operate on the principle of natural convection.

Optimal sized and located heat exchangers and specially designed air flow separation/guiding elements result a **considerable capacity** even without the use of a fan, thereby allowing these convectors to operate as the **main heating appliance in high energy performance buildings**.

Due to **low inertia**, can quickly increase and maintain the set room temperature, **providing the room with exactly as much heat as you require just when it is required**.

Create an effective warm air curtain for large windows, without allowing cold to penetrate the premises. The **heat is perfectly distributed** throughout the room.

Fully floor-mounted, and therefore **do not impede free passage**.

Perfect for any interior, as the only visible element is the grill, the material and colour of which matches floor covering.

May be walked on and can easily **withstand the weight of a number of adults**.

The convectors are supplied with a **stainless steel casings** and **copper-aluminium heat exchangers**, to ensure they remain extremely reliable over the long-term.



10-year warranty

We are confident in the longevity of our trench heaters; therefore, we provide them with a 10-year guarantee.



Tested according to EN16430

The outputs of trench heaters FC have been tested by independent accredited laboratories according to the current standards.

With us, 1 kW means 1 kW.



Work perfectly with low-temperature energy carriers

Due to their high efficiency, FC are **suitable** for operating with low-temperature energy carriers, such as **heat pumps** and **condensing boilers**.



Maximum operating pressure – 25 bar

All the devices are **factory-tested** for leaks at a pressure of **30 bar**. The maximum maintained pressure (strength limit) is **110 bar**. Konveka devices easily withstand hydraulic tests, hydraulic shocks and can be installed in extremely tall buildings.



Noiseless

Completely noiseless operation



Sound insulation

All the supporting parts have sound-insulating elements, to prevent the spread of sound to the premises below.



All casing parts are made of stainless steel

Stainless steel provides **100% corrosion protection**, is **54% stronger** and **45% harder** than carbon steel.



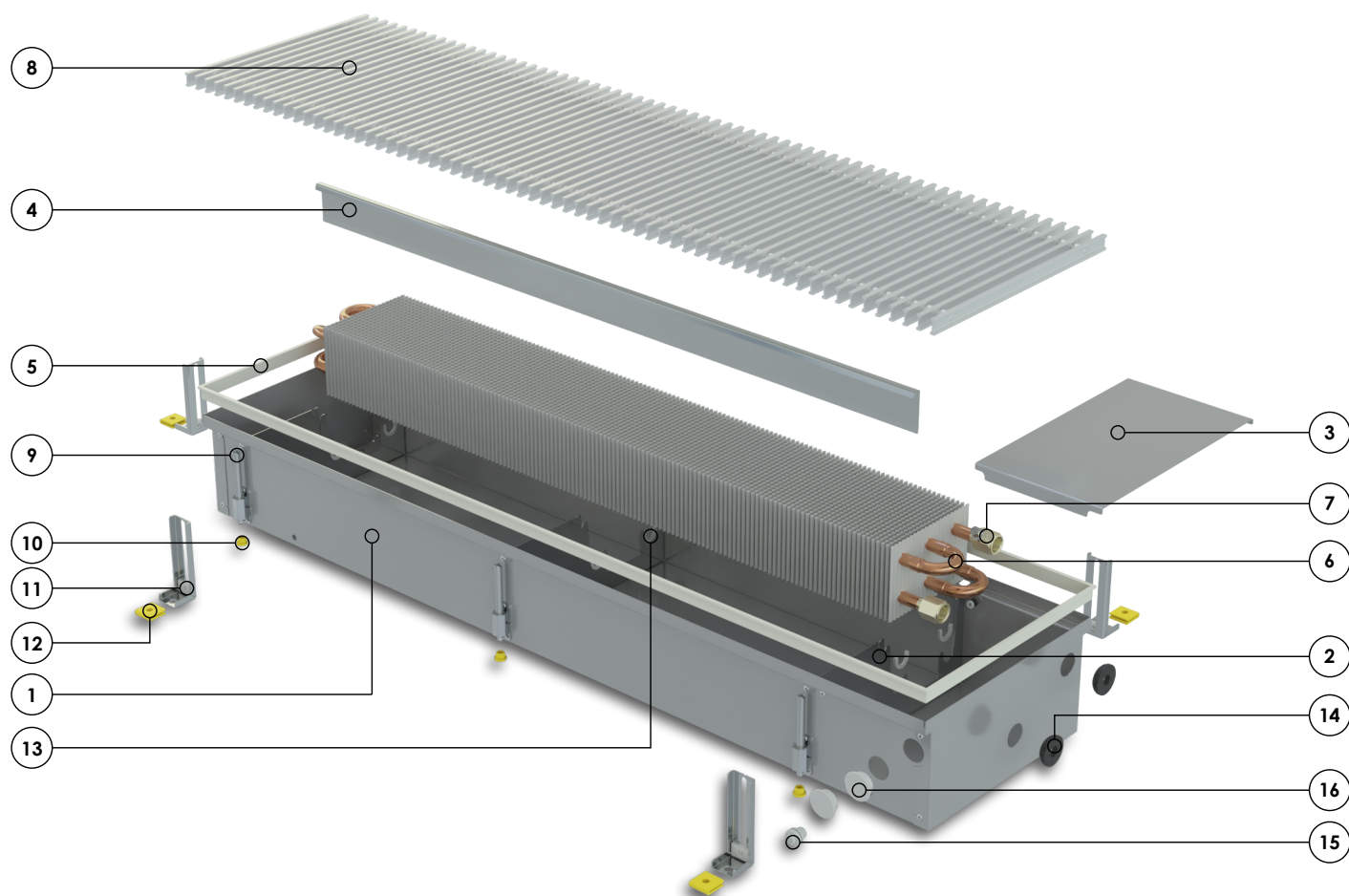
Reinforced casings

As a standard, the FC convector casings are equipped with:

1. **Stiffening elements** to maintain the pressure of the concrete – from 2 to 7 pcs, depending on the length of the casing.
2. M10 **support screws** to withstand the vertical load – from 4 to 20 pcs.
3. Mounting **brackets** for attaching the casing to the floor – 4 pcs.

These structural elements, together with the strong casing material, ensure their stable shape during installation, transportation and operation.

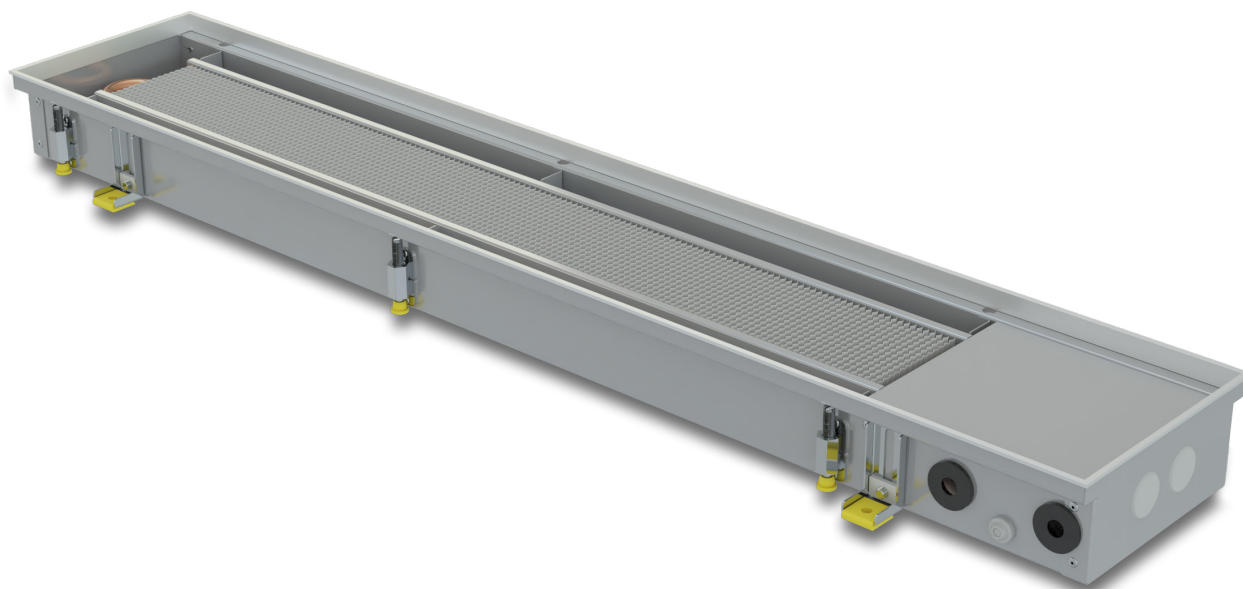
STANDARD SET



- | | | | |
|---|---|---|--|
| ① | Stainless steel casing | ⑪ | Casing fixing to floor brackets |
| ② | Casing stiffening elements | ⑫ | Noise isolating elements for floor brackets |
| ③ | Cover for hydraulic connections | ⑬ | Heat exchanger fixing and protection elements |
| ④ | Air guiding element | ⑭ | Pipe sealing and protection elements |
| ⑤ | Anodized aluminium frame; colour match the colour of grille | ⑮ | Cable sealing and protection elements |
| ⑥ | Copper - aluminium heat exchanger | ⑯ | Plugs for unused holes |
| ⑦ | Air vent | | All fasteners required for installation |
| ⑧ | Protective - decorative grille (optional) | | Installation manual |
| ⑨ | Height adjustment and vertical load supporting bolts | | 5-layer, 2 parts cardboard box, additionally used for device protecting during installation and construction works |
| ⑩ | Noise isolating elements for adjusting bolts | | |

OVERVIEW

| | |
|----------------------------|-------------------------|
| FC | 6 |
| 396 models | |
| Length | from 80 to 500 cm |
| Width | 22, 32 and 42 cm |
| Height | 9, 11, 15, 30 and 45 cm |
| ACCESORIES | 8 |
| GRILLES | 9 |
| ABOUT KONVEKA | 11 |



Dimensions

| | |
|------------------------------|-------------------------|
| Length | 80 - 500 cm |
| Width | 22, 32 and 42 cm |
| Height = installation height | 9, 11, 15, 30 and 45 cm |

Materials

| | |
|----------------------|--------------------|
| Housing | stainless steel |
| Frame | anodized aluminium |
| Heat exchanger pipes | copper |
| Heat exchanger fins | aluminium |

Connections to the heating system

| | |
|-------------------------|----------------|
| Heat exchanger thread | G 1/2" (inner) |
| Standart conection side | right |
| Optional conection side | left |

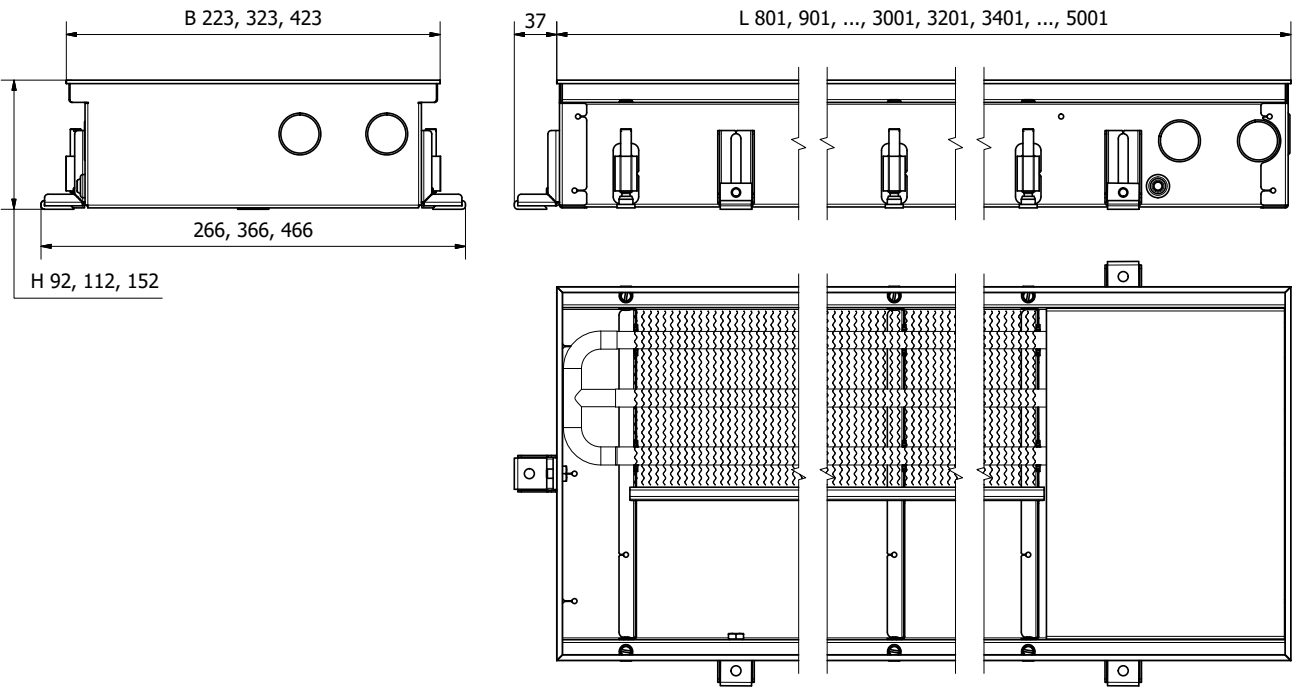
| | |
|---------------------------|-----------|
| Max operating pressure | 25 bar |
| Max operating temperature | 2 - 120°C |

EN16430 certified outputs, W (75/65/20°C)

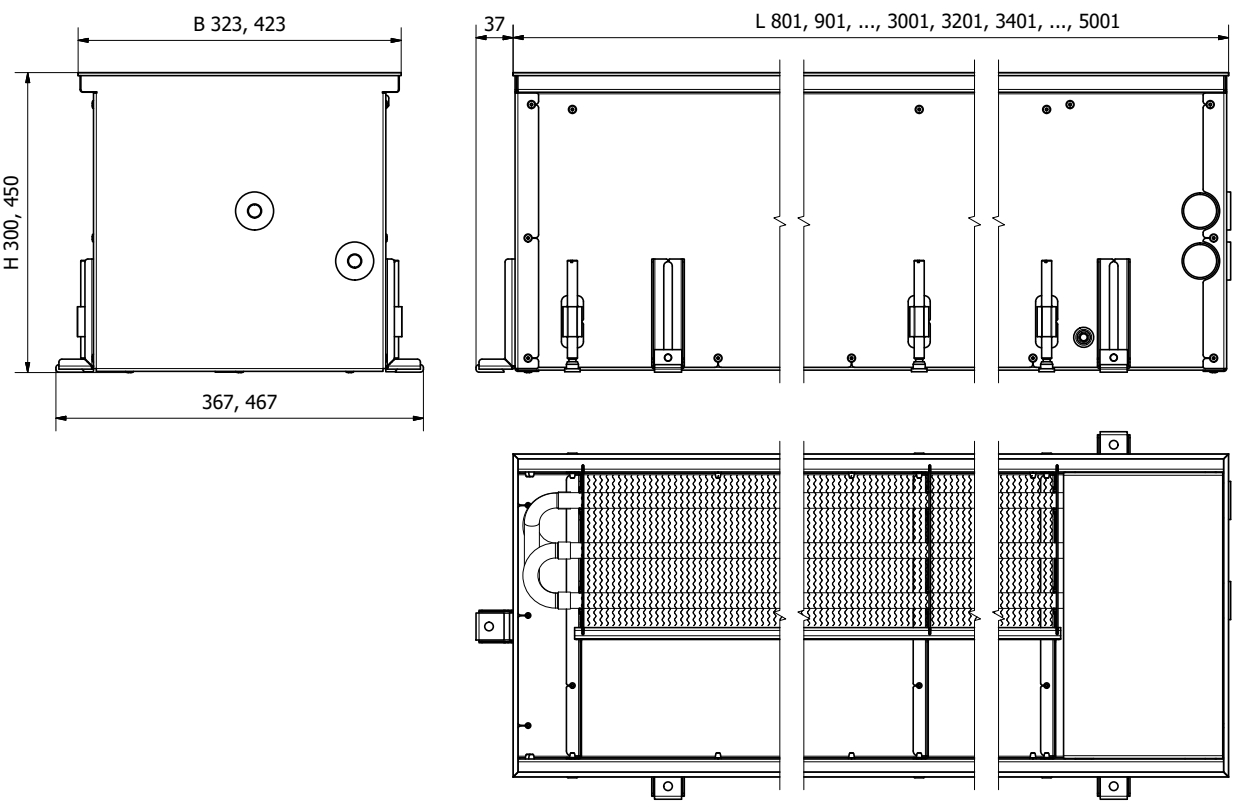
| Width, cm | Height, cm | Length, cm | | | | | | | | | | | | | | | | | | | | | | | | | | | | | | | | |
|--------------|---------------|------------|-------|-------|-------|-------|-------|-------|-------|-------|-------|-------|-------|-------|-------|-------|-------|-------|-------|-------|-------|-------|-------|-------|-------|-------|-------|-------|-------|-------|-------|-------|-------|-------|
| | | 80 | 90 | 100 | 110 | 120 | 130 | 140 | 150 | 160 | 170 | 180 | 190 | 200 | 210 | 220 | 230 | 240 | 250 | 260 | 270 | 280 | 290 | 300 | 320 | 340 | 360 | 380 | 400 | 420 | 440 | 460 | 480 | 500 |
| 22 | 9 | 179 | 211 | 242 | 274 | 305 | 336 | 368 | 399 | 430 | 462 | 493 | 524 | 556 | 587 | 619 | 650 | 681 | 713 | 744 | 775 | 807 | 838 | 870 | 932 | 995 | 1 058 | 1 120 | 1 183 | 1 246 | 1 309 | 1 371 | 1 434 | 1 497 |
| | 15 | 256 | 301 | 347 | 392 | 437 | 482 | 528 | 573 | 618 | 663 | 709 | 754 | 799 | 844 | 890 | 935 | 980 | 1 025 | 1 071 | 1 116 | 1 161 | 1 206 | 1 252 | 1 342 | 1 433 | 1 523 | 1 614 | 1 704 | 1 795 | 1 885 | 1 976 | 2 066 | 2 157 |
| 32 | 9 | 243 | 289 | 335 | 381 | 427 | 473 | 519 | 565 | 611 | 657 | 703 | 749 | 795 | 841 | 887 | 933 | 979 | 1 025 | 1 071 | 1 118 | 1 164 | 1 210 | 1 256 | 1 348 | 1 440 | 1 532 | 1 624 | 1 716 | 1 808 | 1 900 | 1 992 | 2 085 | 2 177 |
| | 11 | 252 | 300 | 347 | 394 | 442 | 489 | 537 | 584 | 632 | 679 | 727 | 774 | 822 | 869 | 917 | 964 | 1 012 | 1 059 | 1 106 | 1 154 | 1 201 | 1 249 | 1 296 | 1 391 | 1 486 | 1 581 | 1 676 | 1 771 | 1 866 | 1 961 | 2 056 | 2 151 | 2 246 |
| | 15 | 383 | 451 | 518 | 586 | 653 | 721 | 788 | 855 | 923 | 990 | 1 058 | 1 125 | 1 193 | 1 260 | 1 328 | 1 395 | 1 463 | 1 530 | 1 598 | 1 665 | 1 733 | 1 800 | 1 868 | 2 002 | 2 137 | 2 272 | 2 407 | 2 542 | 2 677 | 2 812 | 2 947 | 3 082 | 3 217 |
| | 30 | 566 | 665 | 764 | 863 | 963 | 1 062 | 1 161 | 1 260 | 1 360 | 1 459 | 1 558 | 1 657 | 1 756 | 1 856 | 1 955 | 2 054 | 2 153 | 2 253 | 2 352 | 2 451 | 2 550 | 2 650 | 2 749 | 2 947 | 3 146 | 3 344 | 3 543 | 3 741 | 3 940 | 4 138 | 4 337 | 4 535 | 4 734 |
| | 45 | 730 | 857 | 983 | 1 110 | 1 237 | 1 364 | 1 491 | 1 618 | 1 745 | 1 872 | 1 999 | 2 125 | 2 252 | 2 379 | 2 506 | 2 633 | 2 760 | 2 887 | 3 014 | 3 141 | 3 267 | 3 394 | 3 521 | 3 775 | 4 029 | 4 283 | 4 536 | 4 790 | 5 044 | 5 298 | 5 551 | 5 805 | 6 059 |
| 42 | 9 | 292 | 343 | 393 | 444 | 495 | 546 | 596 | 647 | 698 | 749 | 800 | 850 | 901 | 952 | 1 003 | 1 053 | 1 104 | 1 155 | 1 206 | 1 256 | 1 307 | 1 358 | 1 409 | 1 510 | 1 612 | 1 713 | 1 815 | 1 916 | 2 018 | 2 119 | 2 221 | 2 322 | 2 424 |
| | 11 | 353 | 415 | 477 | 539 | 601 | 663 | 725 | 787 | 849 | 911 | 973 | 1 035 | 1 097 | 1 159 | 1 221 | 1 283 | 1 345 | 1 407 | 1 469 | 1 531 | 1 593 | 1 655 | 1 717 | 1 841 | 1 965 | 2 089 | 2 213 | 2 337 | 2 461 | 2 585 | 2 709 | 2 833 | 2 957 |
| | 15 | 497 | 585 | 672 | 760 | 848 | 935 | 1 023 | 1 110 | 1 198 | 1 285 | 1 373 | 1 460 | 1 548 | 1 636 | 1 723 | 1 811 | 1 898 | 1 986 | 2 073 | 2 161 | 2 248 | 2 336 | 2 424 | 2 599 | 2 774 | 2 949 | 3 124 | 3 299 | 3 474 | 3 649 | 3 824 | 4 000 | 4 175 |
| | 30 | 737 | 867 | 996 | 1 125 | 1 255 | 1 384 | 1 514 | 1 643 | 1 772 | 1 902 | 2 031 | 2 160 | 2 290 | 2 419 | 2 548 | 2 678 | 2 807 | 2 937 | 3 066 | 3 195 | 3 325 | 3 454 | 3 583 | 3 842 | 4 101 | 4 360 | 4 618 | 4 877 | 5 136 | 5 394 | 5 653 | 5 912 | 6 171 |
| | 45 | 875 | 1 028 | 1 182 | 1 335 | 1 489 | 1 642 | 1 796 | 1 949 | 2 103 | 2 256 | 2 410 | 2 563 | 2 717 | 2 870 | 3 024 | 3 177 | 3 331 | 3 484 | 3 638 | 3 791 | 3 945 | 4 098 | 4 252 | 4 559 | 4 866 | 5 173 | 5 480 | 5 787 | 6 094 | 6 401 | 6 708 | 7 015 | 7 322 |

Heat outputs at specific temperatures are available at www.konveka.com

HEIGHT 9-15 CM



HEIGHT 30-45 CM



ORDER CODE

| Type | Length, cm | Width, cm | Height, cm | Example |
|------|------------|-----------|------------|--------------|
| FC | 100 | 32 | 11 | FC 100-32-11 |

ACCESSORIES

THERMOSTATIC VALVE **TVS15**

Controls flow of energy carrier. Controlled by thermal actuator TA230 or capillary thermostatic head THC



Controls flow with thermostatic head or thermoelectric actuator

Provides possibility to close flow and disconnect heat exchanger from heating system without draining

DN15 Kvs = 2,00

LOCKSHIELD VALVE (STRAIGHT) **LS15**

Opens, closes or limits flow of energy carrier



For energy carrier opening, closing and presetting of maximal flow

Provides possibility to close flow and disconnect heat exchanger from heating system without draining

DN15 Kvs = 1,74

DN20 Kvs = 1,93

LOCKSHIELD VALVE (ANGLE) **LA15**

Opens, closes or limits flow of energy carrier



For energy carrier opening, closing and presetting of maximal flow

Provides possibility to close flow and disconnect heat exchanger from heating system without draining

DN15 Kvs = 1,74

DN20 Kvs = 1,93

THERMOSTATIC VALVE ACTUATOR **TA230**

Opens / closes thermostatic valve. Controlled by room thermostat RTB230



Opening/closing of thermostatic valves (ON/OFF)

Thermoelectric

Opened/Closed indicator

Voltage 230V AC

ROOM THERMOSTAT **RTB230**

Controls thermal actuator TA230 according to preset room temperature



For maintaining the set room temperature

Day/night and weekly temperature programmes

Accuracy of temperature control $\pm 0,5^{\circ}\text{C}$

Power supply 230V AC

Valve actuator control (ON/OFF)

Backlit LED display

CAPILLARY THERMOSTATIC HEAD **THC**

Controls preset room temperature



Temperature range $0^{\circ}\text{C} - 27^{\circ}\text{C}$

Protection against freezing

Length of capillary pipe - 1,2 m

Thread - M30 x 1,5 mm

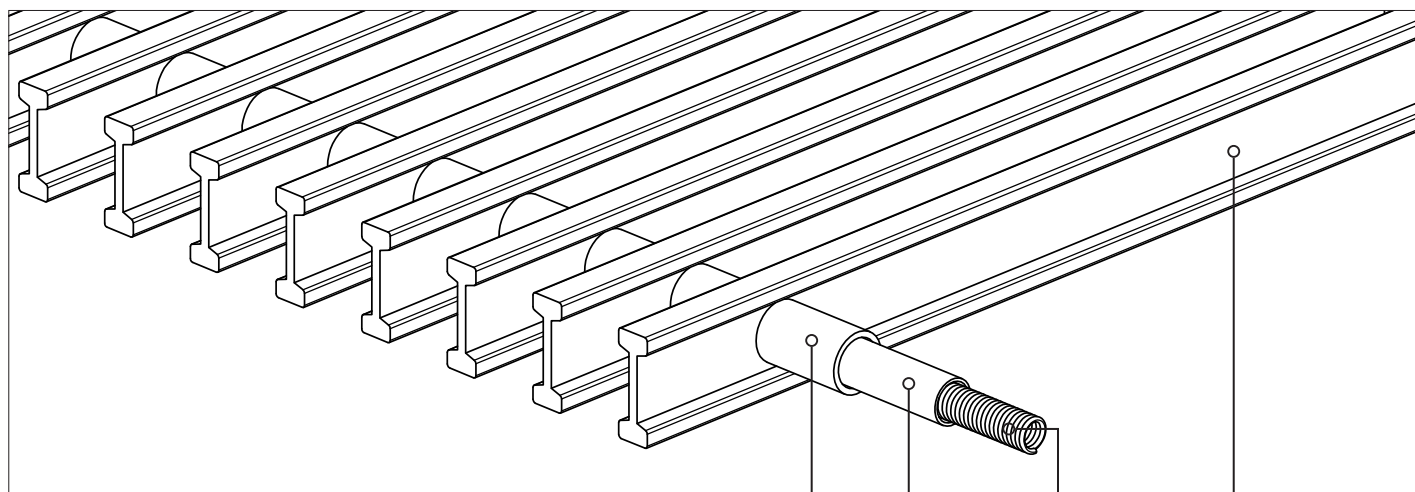
Body material - ABS

ORDER CODES

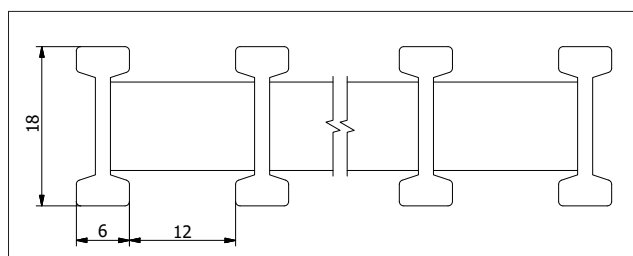
| Accessory | Order code |
|-----------------------------|------------|
| Thermostatic valve | TVS15 |
| Thermostatic valve actuator | TA230 |
| Lockshield valve (angle) | LA15 |
| Lockshield valve (straight) | LS15 |
| Room thermostat | RTB230 |
| Capillary thermostatic head | THC |

GRILLES

ALUMINIUM ROLL-UP GRILLES



GRILLE PROFILE



2 4 3 1

1 Aluminium profile

- made of anodized aluminium
- reinforced reversible double T profile

2 Spacers

- made of anodized aluminium
- does not shrink or crack when exposed on UV or heat
- the colour is exactly the same as colour of profiles

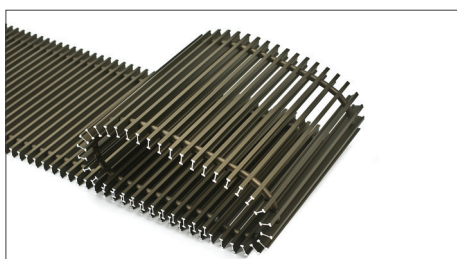
3 Spring

4 Flexible protective pipe

SILVER (ALS)



BROWN (AL 10)



BLACK (AL 50)

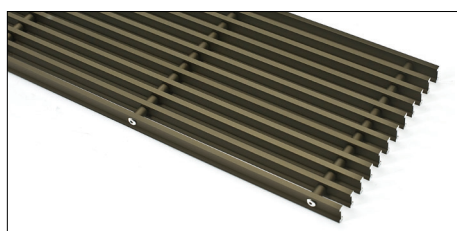


ALUMINIUM LINEAR GRILLES

SILVER (ALS)



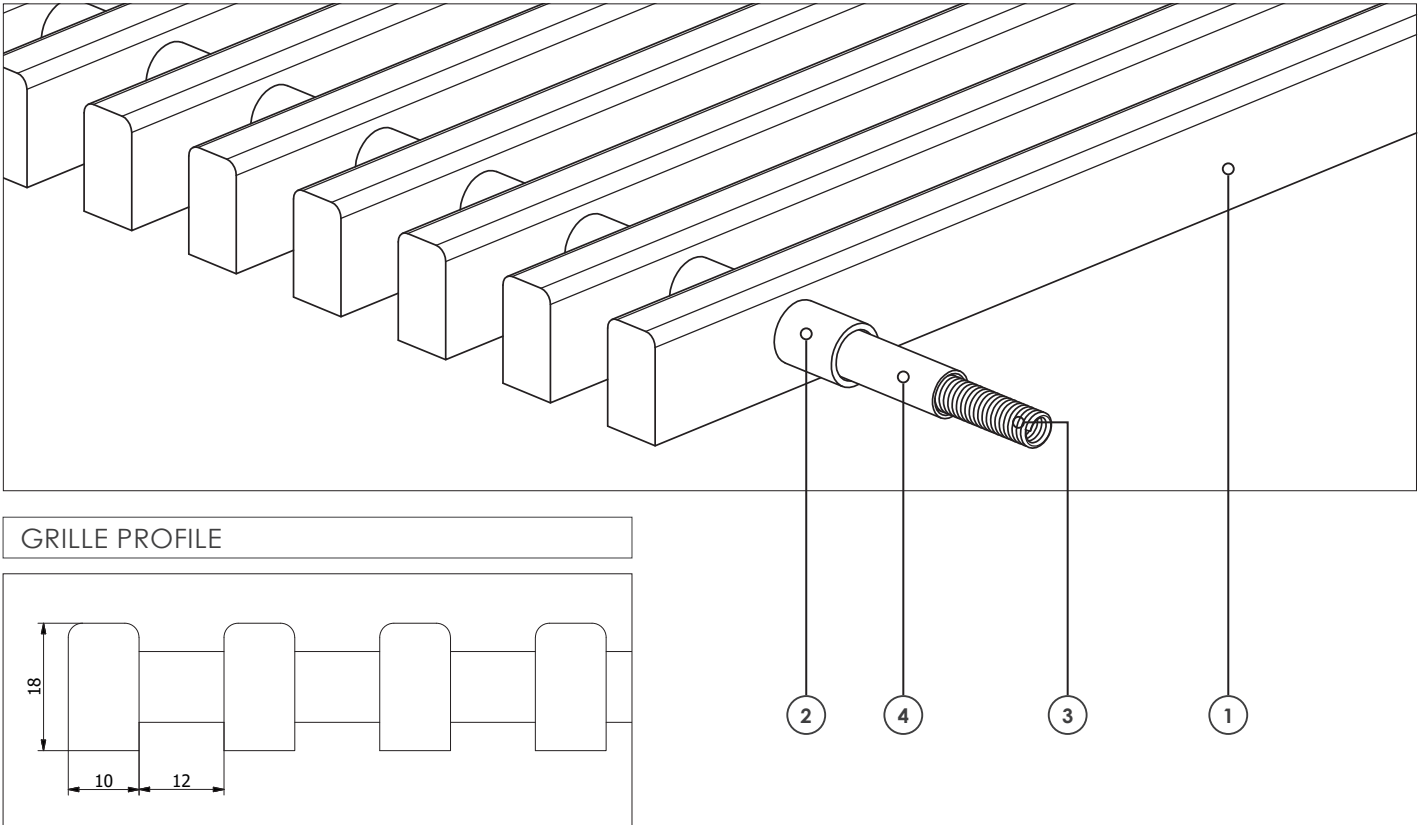
BROWN (AL 10)



BLACK (AL 50)



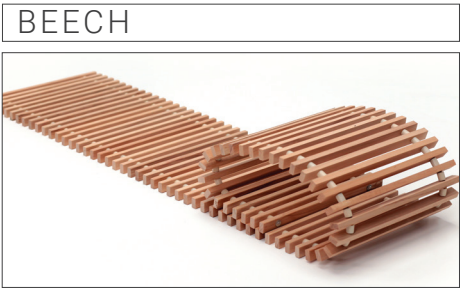
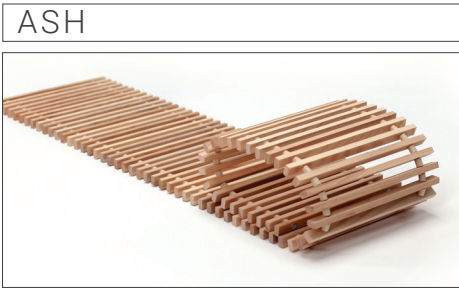
WOODEN ROLL-UP GRILLES



① Wooden profile
- made of solid wood

② Spacers
- made of anodized aluminium
- does not shrink or crack when exposed on UV or heat

③ Spring
④ Flexible protective pipe



ORDER CODE FOR GRILLES

| Type | Length, cm | Width, cm | Material | Example |
|------|------------|-----------|----------|---------------|
| GR | 120 | 32 | ALS | GR 120-32 ALS |

ABOUT KONVEKA

Konveka is a **full production cycle convector manufacturing company** engaged in this activity **since 2005**. The range of products we develop and manufacture is wide: from simple natural convection convectors to complex devices with fans for heating, cooling and ventilation.

Konveka is a manufacturer of high-quality and reliable convectors:

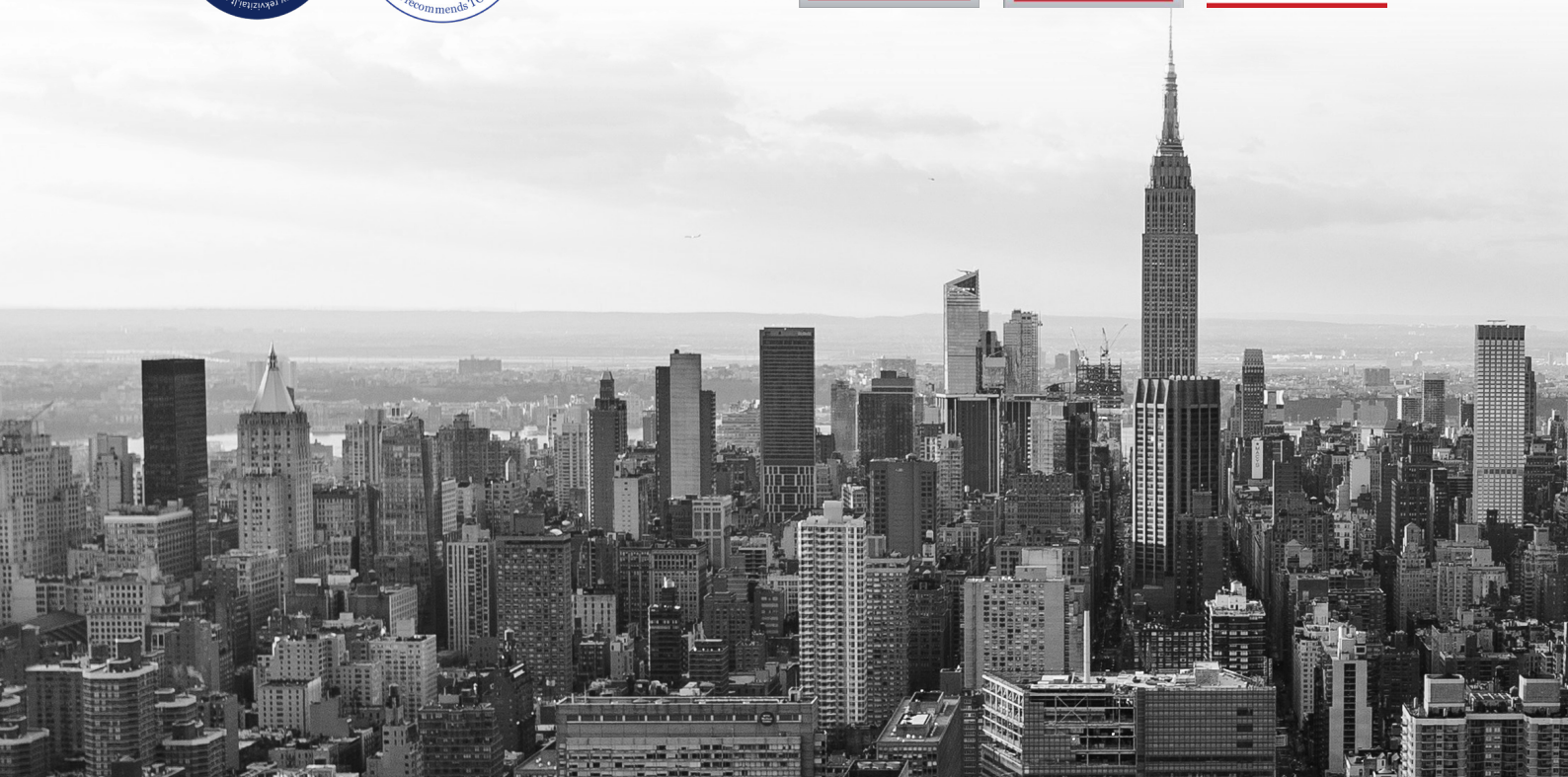
- We provide a **5 - 10 year warranty for all our products** (except their electrical part) without any additional warranty extension fees.
- **The capacities of all our products are determined by independent accredited laboratories** according to current standards. With us, 1kW means 1kW.
- We **do not use cheap, unapproved solutions or use unreliable materials** when designing and manufacturing our devices.

Although we operate in a highly competitive international market, **we are at the forefront where quality, durability and reliability are valued.**

We are well known in **Eastern and Western Europe, Scandinavia, North America and Central Asia**. Konveka products can be seen in many prestigious buildings around the world: administrative buildings, shopping malls, airports, restaurants, theaters, universities, hotels, apartment buildings and individual homes. Visit our website www.konveka.com for more information.

Konveka consistently wins **national awards** (see below) for **reliability, consistency and business growth**.

Our slogan - **"More than you expected"** reflects the quality of our products and technical solutions, which often exceed customer expectations. We value our customers and are happy to be a part of their successful business.





Konveka, UAB
Vokieciu 185, LT-45251 Kaunas
Tel. +370 600 05968, +370 677 06303
Email: donatas@konveka.lt, sales@konveka.lt

www.konveka.com